

Win and retain more assets

Factor analysis has become a critical tool in investment management for everything from portfolio construction to communication with investors. Our Style Skyline® gives you the factor edge you need to:

- Quickly highlight the factors that matter most to your portfolio, your clients and prospects
- Connect your portfolio's factor story directly to the holdings
- Identify all your factor tilts – intended and unintended
- Demonstrate your alpha generation above factor contributions

Build trust with independent factor transparency

Prove your alpha beyond factor impacts

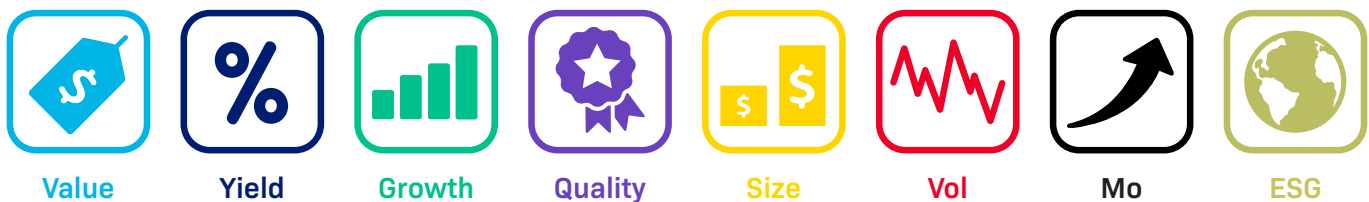
See how asset owners and consultants see you

Show how ESG fits into your portfolio

Customize your Style Skyline® to instantly show the factor exposures that support your unique story



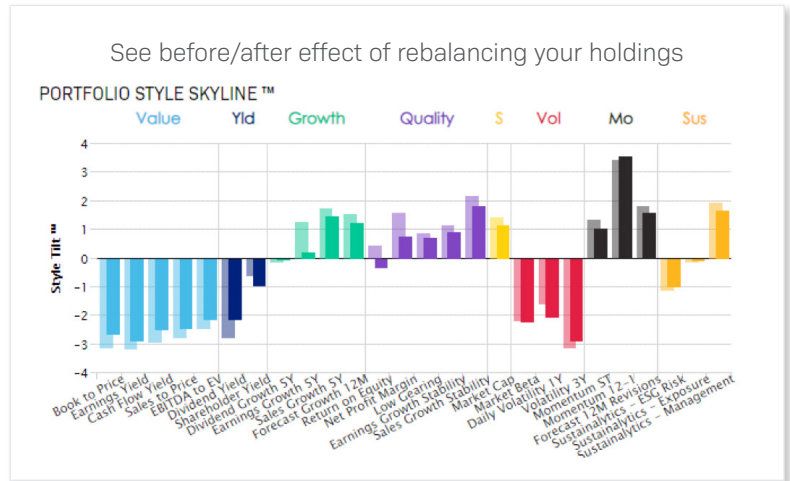
With Style Analytics, choose to define which individual factors belong to each style by including only the ones that are meaningful to you. Understand and communicate your portfolio's unique exposure to traditional and ESG factors simultaneously.



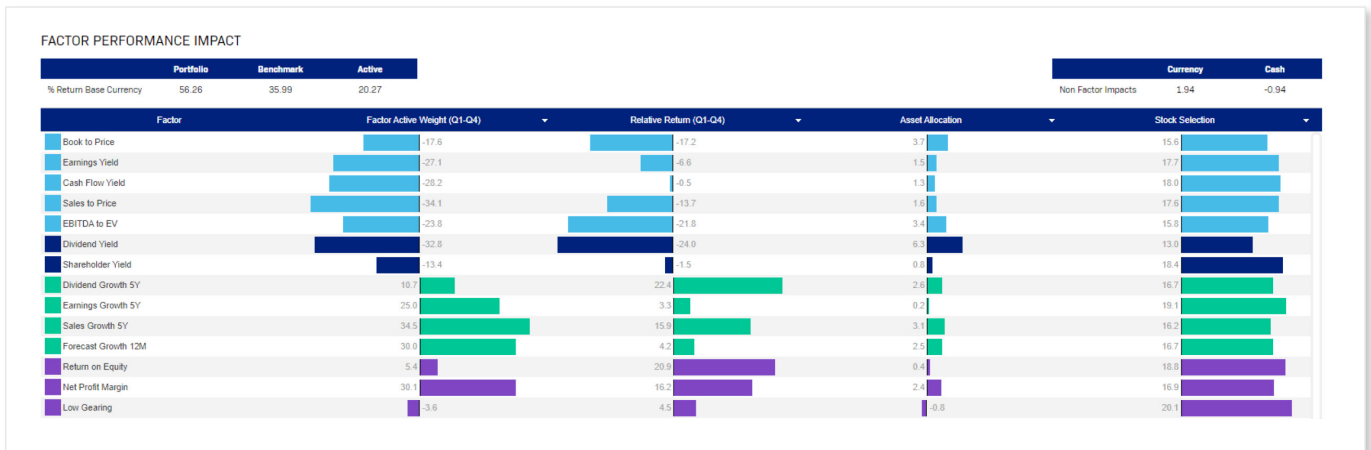
Key Benefits

- Demonstrate your value to investors more clearly with factor transparency
- Reduce risk of redemption by increasing your investors' trust
- Share independent verification of your portfolio's investment style
- Simulate portfolio rebalancing choices to see how they impact your Style Tilt® signature
- Examine your style through time to prove consistency

What-If Analysis



Demonstrate your stock selection skills through our easy to explain factor attribution analysis



Global reach

EMEA

T: +44 20 7467 5500

Japan

T: +81 3 5219 1279

Canada

T: +1 514 393 0101

China

T: +86 21 28909032

USA

T: +1 617 424 8080

France

T: +33 1 73 44 28 97

Australia

T: +613 9225 5040

styleanalytics.com